

# Working with our community

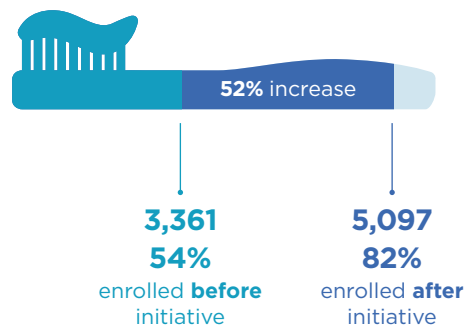
The Social Sector Trial is testing new approaches to health and social sector change.

We are delivering cross-agency solutions by working collaboratively with the Ministries of Health, Social Development, Education and Justice, the New Zealand Police, Te Puni Kōkiri, Regional Public Health, Ngāti Toa, Porirua City Council, and non-government organisations.



## DENTAL ENROLMENT FOR UNDER FIVE YEAR OLDS

Porirua pre-school children are benefiting from free dental care, now they are enrolled with Bee Healthy following a successful information sharing initiative between primary care and dental services.



## PUTTING KEY HEALTH MESSAGES INTO PRACTICE

Primary schools and early childhood centres in Porirua received free health care products, in order to prevent children going to hospital for dental or skin care.



## REDUCING AMBULATORY SENSITIVE HOSPITALISATIONS

Since the Social Sector Trial started in June 2013 there has been a decline in Ambulatory Sensitive Hospitalisations for Porirua residents.

